



COMPANY PROFILE

RC: 1692151



PIN-TECH
AUTOMATION ENGINEERING LTD.





TABLE OF CONTENT

1. ABOUT OUR COMPANY
2. COMPANY OVERVIEW
3. OUR METHOD
4. OUR VALUES
5. PHOTO GALLERY
6. OUR SERVICES
7. PAST PROJECTS
8. PIN-TECH MARINE
9. MARINE SERVICE
10. OUR PARTNERS
11. CERTIFICATE OF INCORPORATION



About Our **Company**

We at Pin-Tech Automation Engineering LTD (formally Prudent electrical and Mechanical Engineering Works), we've run a client focused organization since our existence by placing clients needs at the earth of everything we do, we are able to deliver high value products and services that meet the divers needs of our clients and local communities, thereby contributing to social development and economic growth.



Flowing within our veins is the passion to deliver high quality engineering project, this passion has driven us to exceed way beyond our client's expectations, and most importantly we do it not because it is the right thing, but because it is the **ONLY** way we know how.

We at Pin-Tech Automation Engineering LTD have a well detailed understanding of health, safety and environment issue, permits and licenses required for engineering projects, and use on integrated management system to ensure compliance.

Also as a team, comprising of professionals and entrepreneurs with many years of experiences in the industry, we collectively recognize the importance of completing projects on schedule and consistently take adequate steps to ensure we deliver all project at the right time, thereby reducing cases of protracted downtime required for optimizing essential machinery.

Our executive team will direct and monitor progress on a daily basis and also work closely with project managers, consultants and clients to ensure that all aspect of the various projects we handle are undertaken safely and executed efficiently.

We therefore look forward to discussing your project and presenting innovative, state-of-the -art solutions to meet your company's various requirements.

Company Overview

Our Overview is to be the most enterprising, most organized, most detailed, most efficient, most timely and best solution provider in our field of Engineering Services in Nigeria.



Our Method

Is to consistently maintain exceptional quality attention to detail and prompt delivery with the environment in mind that is in random with international standards (ISO 9001/14001,OHSAS 18001) on every project we undertake.



Our Values

We have translated our statement into five core values which all apply in project and delivery

- Quality
- Innovation
- Efficiency
- Integrity
- Service



PHOTO GALLERY

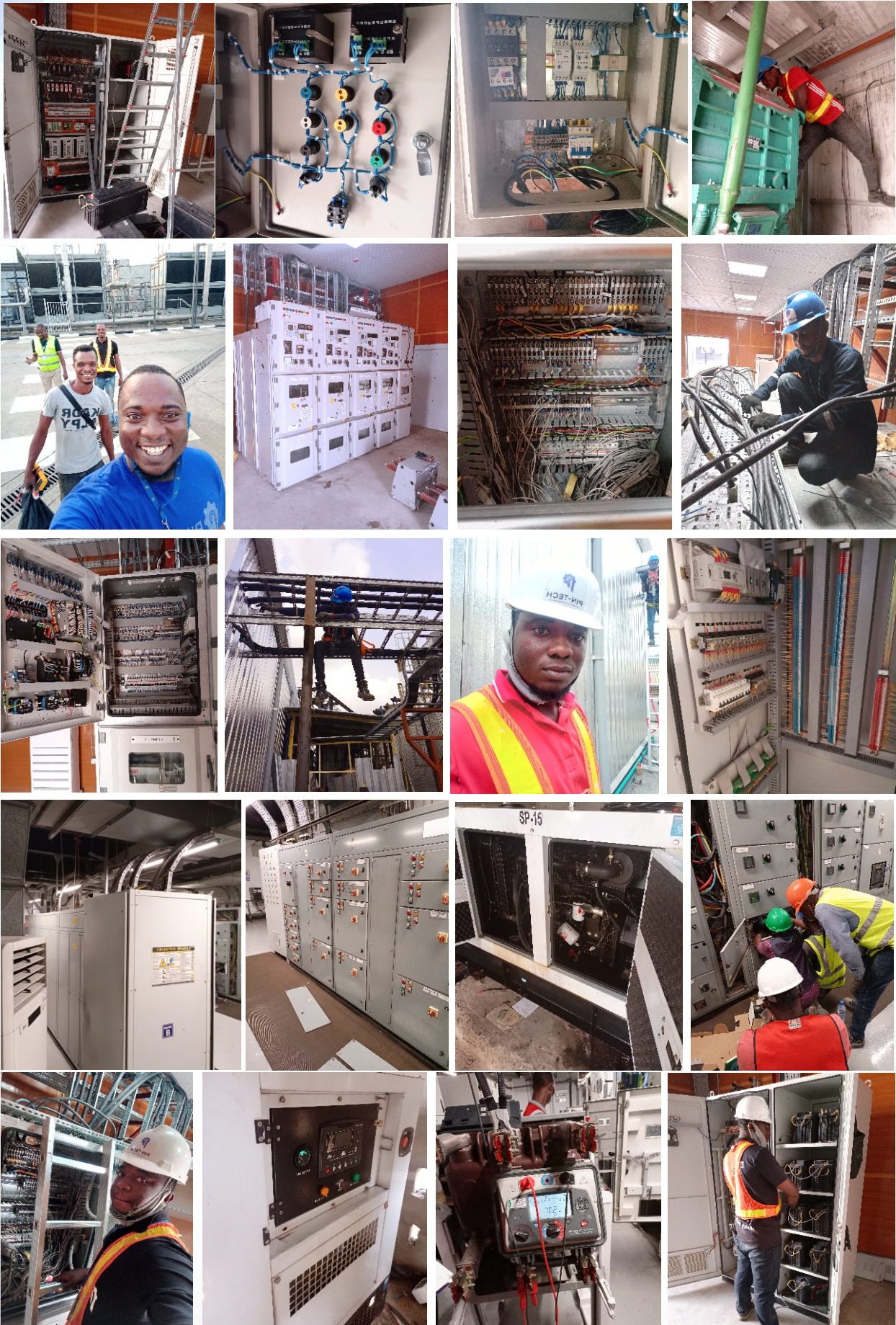
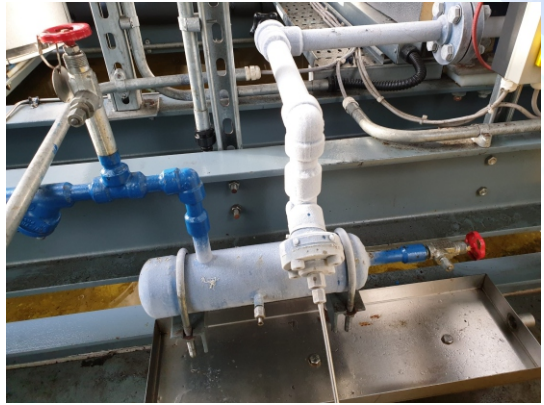
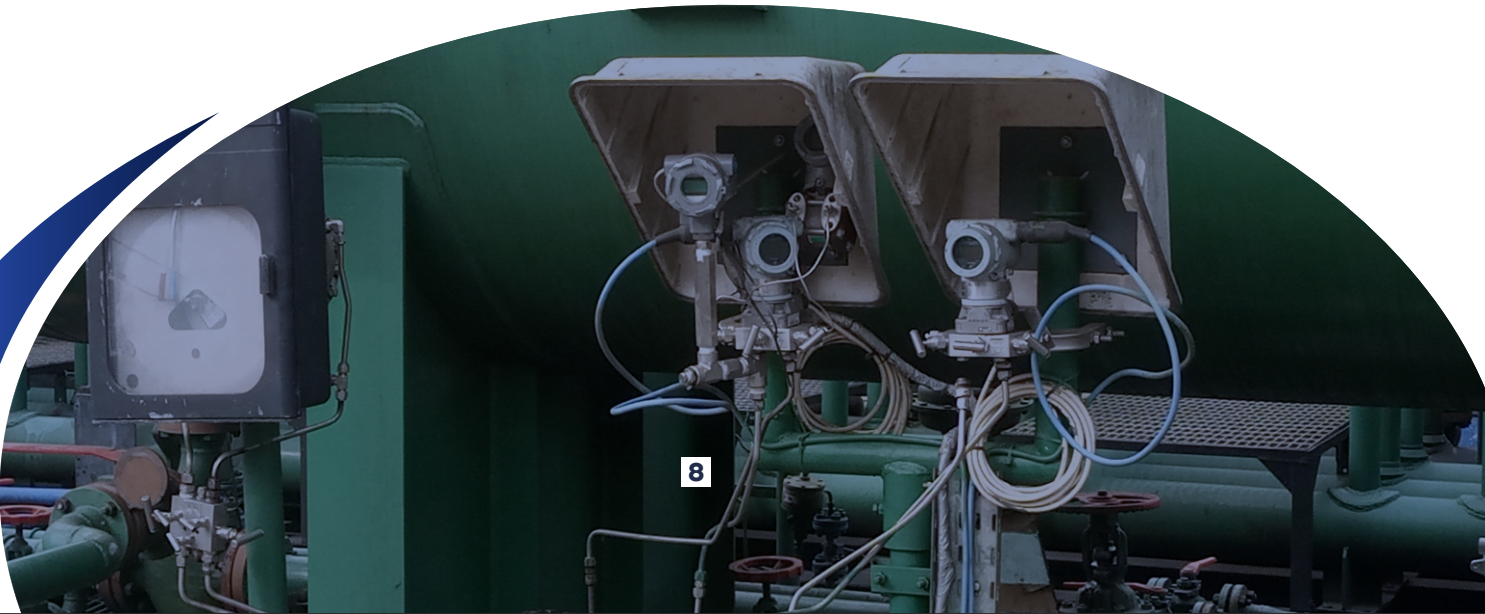


PHOTO GALLERY



Our **Services**

- Procurement
- Fabrication, Tank Cleaning and Oil Sludge Evacuation
- Communication and Instrumentation
- Electrical/Process Control Panel
- Generator Maintenance and Power Control
- ON-SITE Services & Assistance
- Industrial/Manufacturing Process
- Industrial Internet of Things (IoT)
- Machine Installation and Commissioning
- Installation, Maintenance and Construction of Control Panels
- Precision Machining
- Lightening protection
- Underground and overhead cabling
- Mechanical fittings and Valves
- Corrosion Maintenance and Hydro-blasting
- Industrial Cleaning and Fumigation
- Supply of Labour and Marine Tools
- Scaffold, Sandblasting and Industrial Painting
- Oil and Gas Services
- Industrial Automation & System Integration
- Electrical and Industrial Engineering
- Rural Electrification and Street Lightening



Past Projects

- Industrial machines maintenance installation.
- Industrial equipment and control panels components supplies.
- Calibration of Pressure Relief Valves and Pressure Switch at Ogini Gas Plant, Delta State.
- Calibration of Pressure Transmitters and Installations of Level Controllers at Ogini Gas Plant.
- Construction and designs of control panels for various machines.
- Installation of compressor and auto-start diesel engine at Beta glass.
- General Installation of service workshop equipments; car lift, air compressors and auto spray cabin at CFAO, NMI, Abuja.
- Warehouse lighting installation at Evans Medical PLC.
- Installations and maintenance of 500 KVA generators at Sheraton Hotels, Ikeja
- Installation of overhead crane at Drury Nig. Limited, Ogun State.
- Installation of 10 tonnes steam boiler at Sonia foods
- Plant equipment installation; mechanical and electrical at Crown Flour Mills.
- Installation of bore hole, auto-controlled treatment plant, sewage treatment plant and chillers at MRS Oils Nig. PLC.
- Installation of Cummins 2MVA 11kva generators at British American Tobacco Company, Ibadan.
- Electrical installations, wiring industrial and domestic offices.

Pin-Tech Marine

We ensure that your ship is safe and your crew can work effectively. Proper electrical installations makes the ship safer to operate and help the crew accomplish their daily tasks effectively. for that all electrical equipment and wires need to be correctly designed, installed and maintained.

Pin-Tech Automation Engineering handle electrical installations in new ship builds as well as large scale modernization projects. Our preventive marine electrical maintenance greatly reduces the risk of equipment failure while on the seas as parts are maintained and replaced proactively.

Our employees are well versed in ships' electrical systems. we have a long history of cooperation with owners, shipyards, shipbuilding companies, suppliers and other maritime players.



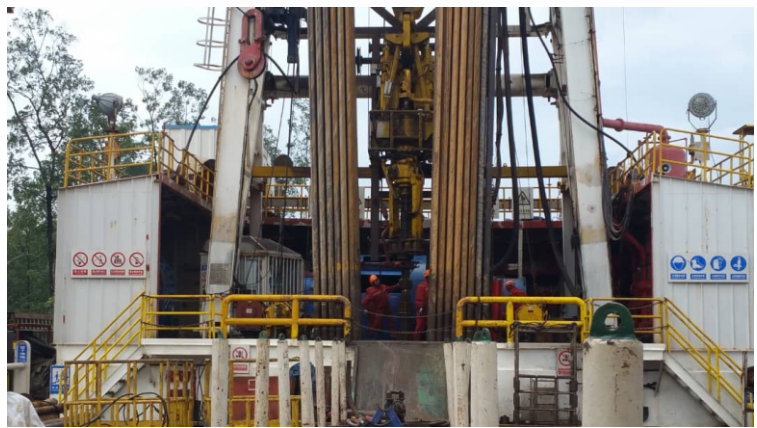
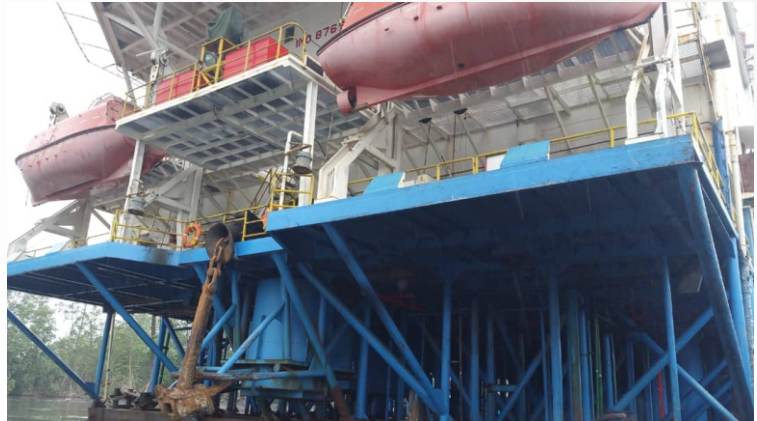
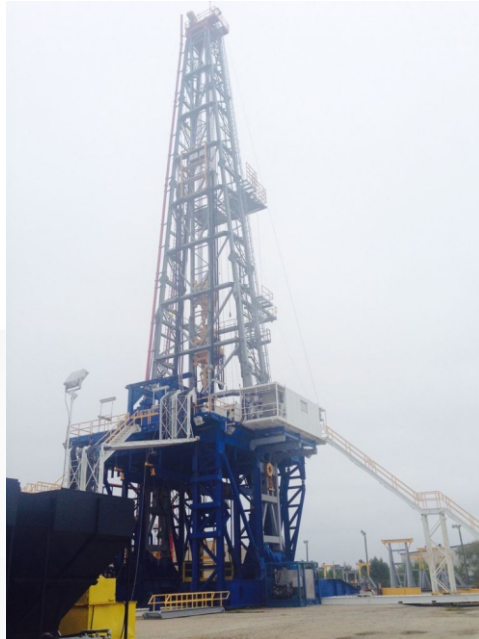


We feel right at home when working in a hectic environment that sets high standards in regard to health, environmental consciousness and operational reliability. All our installations are done according to international marine standards and approved safe practices.

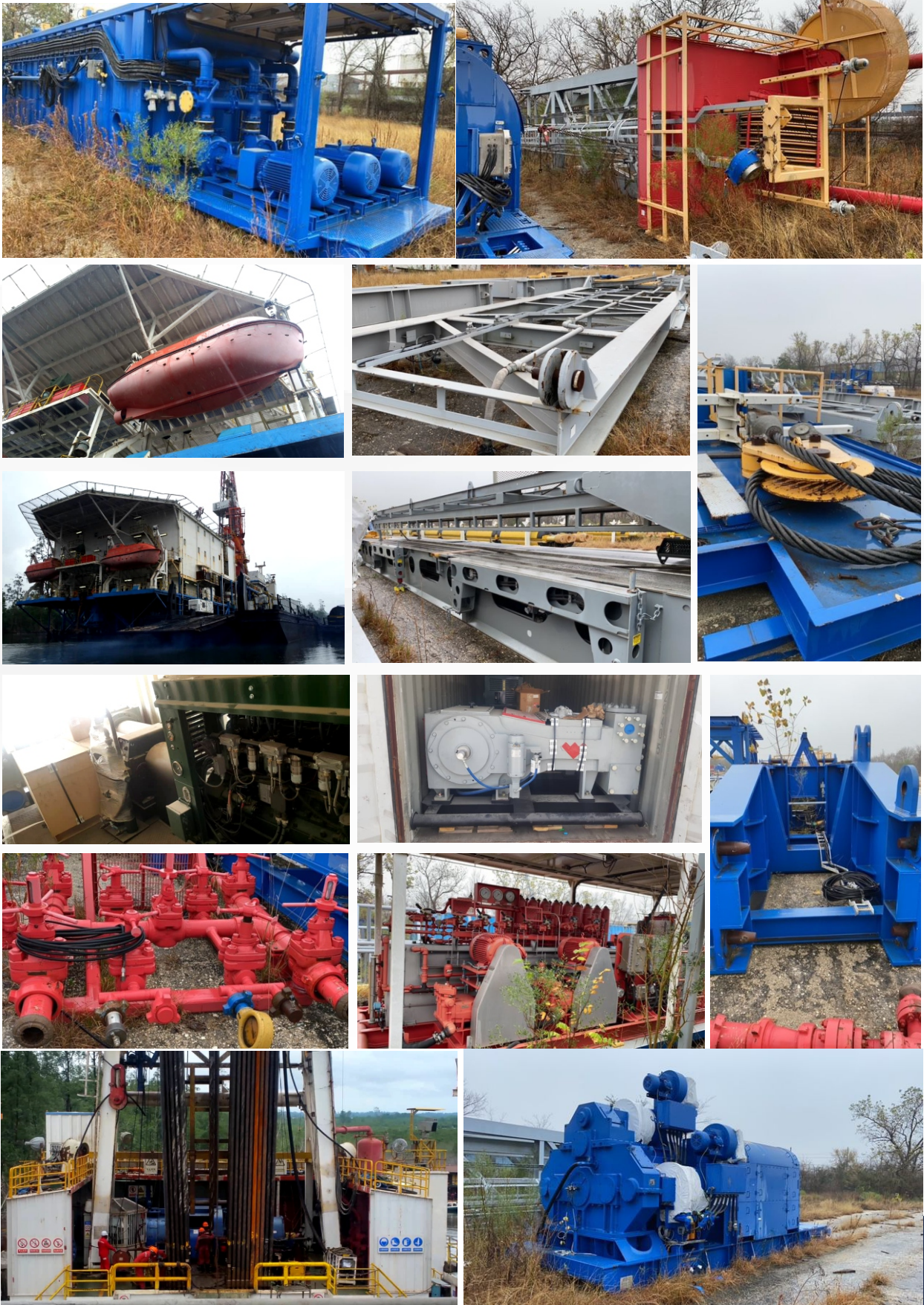
Our Marine Electrical services include:

- Electrical design and Engineering.
- Turn-key deliveries for newbuilds and projects.
- Shore Power (AMP, S2S) Solutions for ships and harbours.
- Energy optimizations for ships.
- Pumps and ventilation systems.
- Preventive maintenance and commissioning works.
- Electrical Installations and maintenance for safety and efficiency on your ship.

MARINE PHOTO GALLERY



MARINE PHOTO GALLERY



OUR PARTNERS



RC 1692151



**CORPORATE AFFAIRS COMMISSION
FEDERAL REPUBLIC OF NIGERIA**

Certificate of Incorporation

I hereby certify that

PIN-TECH AUTOMATION ENGINEERING LIMITED

*is this day incorporated under the COMPANIES AND ALLIED
MATTERS ACT 1990 and that the Company is Limited By Shares.*

Given under my hand at Abuja this 29th day of July, 2020.

TAX IDENTIFICATION NUMBER: 22463427-0001

1323243



A handwritten signature in black ink, appearing to read "A. G. Abubakar".

A. G. ABUBAKAR
Registrar - General



CONTACT US

0816-683-5688, 0803-537-7768



pin_tech



**info@pintechautomations.com
pintechengineeringworks@gmail.com**



**14. Honey Moon Plaza
Rumuodalu/Rumuola Road
Port-Harcourt**



Branch Office:
**KM 25, Badagry Expressway, Beside
Community Bank, Cele Bus-Stop, Ijanikin,
Lagos.**

**2, Assemblies of God Street, Ozoro,
Delta State.**



info@pintechautomations.com